



FOR IMMEDIATE RELEASE

## PRESS RELEASE

**Rocky Mount, NC, (November 27, 2017)** – We are pleased to introduce an engraving kit for the Futura Pro and Futura Pro One. Owners can further increase the capability of these machines with this new kit.

The special jaws make it easy to install a wide variety of metal keys, small tags and plates. The software has been developed to guide you step-by-step through creation and management of customized engraving models.

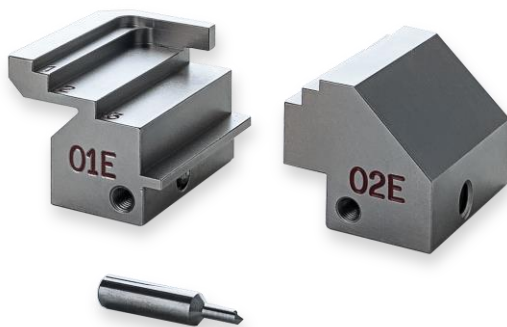
To begin engraving engrave keys, small medallions and plates, simply change the cutter and install the engraving jaws on the dimple/laser side to easily. The cutter will engrave both metal and aluminum.

The software includes over 220 default user templates (models) and identifies the areas for inserting text. The *User Model Editor* allows the user to “customize” an existing template to create new templates (models).

The FREE software will automatically load when an update is performed.

### Kit Components

Kit includes 01E and 02E Jaws and 18DW Cutter.



The special engraving jaws feature 3 areas (or steps) for items of different dimensions:

- 1.02" - 1.26" X 1.57" (26-32mm x 40mm)
- .79" - 1.02" X 1.57" (20-26mm x 40mm)
- .32" - .55" X 1.57" (8-14mm x 40mm)

To order or for additional information, contact your Ilco distributor.

Web Site: [www.ilco.us](http://www.ilco.us)

Email: [info.ilco@kaba.com](mailto:info.ilco@kaba.com)

Customer Service: 800-334-1381 (option 1)

Kaba Ilco Corp.  
400 Jeffreys Road, Rocky Mount, NC 27804  
[www.adusa.us](http://www.adusa.us) | [www.ilco.us](http://www.ilco.us)  
+1 800-334-1381 or +1 252-446-3321



dormakaba Group